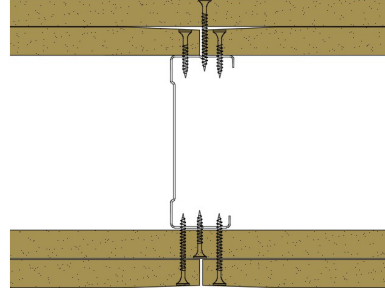


92-K-58 - SPEEDLINE System Data Sheet - Version V1 (24-10-23)

SPEEDLINE 92mm 'C' Stud Partition @600mm Ctrs,
with 2x Knauf 15mm Wallboard each side



System Performance Breakdown

Fire Resistance:

BS476 Part 22:1987:

Test Ref & Date or Applied Ref & Report:

Max Height:

Thickness:

Duty Grade: BS 5234: Part 2:1992:

Sound Insulation:

60/60 Minutes (Integrity/Insulation).

BRE 208596 - BRE Report P102396-1011B

Refer to Speedline Specification Clause

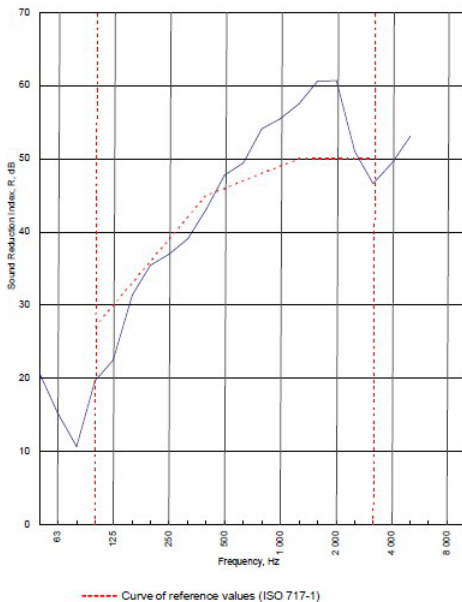
154 mm. (At Base Track, Excluding Finishes)

Severe - Annexes A-F

46 R_w dB, Date Tested or Assessed Against - 70-K-57


Test Code:
H17517AA
Test Date:
08/08/2011


Freq. Hz	R dB
50	20.8
63	15.3
80	10.7
100	19.6
125	22.5
160	31.4
200	35.4
250	36.9
315	39.1
400	43.1
500	47.7
630	49.4
800	54.1
1000	55.5
1250	57.5
1600	60.6
2000	60.7
2500	51.0
3150	46.6
4000	49.4
5000	53.1
6300	
8000	
10000	





Rating according to BS EN ISO 717-1:1997	R_w (C;Ctr) = 46 (-3;-9) dB		
Evaluation based on laboratory measurement results obtained by an engineering method:	$C_{50-3150} = -6$ dB	$C_{50-5000} = -5$ dB	$C_{100-5000} = -2$ dB
	$C_{0,50-3150} = -16$ dB	$C_{0,50-5000} = -16$ dB	$C_{0,100-5000} = -9$ dB

TESTED AT ONE OF THE UKAS ACCREDITED LABORATORIES BELOW

B.T.C (H-Ref on Graph) 

B.R.E 

AIRO 

S.R.L 

Customer: Metsec plc Hepsec Division

BTC 17517A: Page 8 of 10

